

## 10.22.2020 Weekly Update

*Reyna Pratt, Chair of the Building Project Task Force, provides our updates as construction progresses.*

I'm excited to share updates with you this week about two spaces – one that is new to us and one that has been repurposed.

At the west end of the building, we have added a three-story addition, seen in the picture below.



The addition extends the Social Hall and gives us both storage (a much-needed commodity) and a lovely balcony, seen in the next picture from inside the Social Hall.

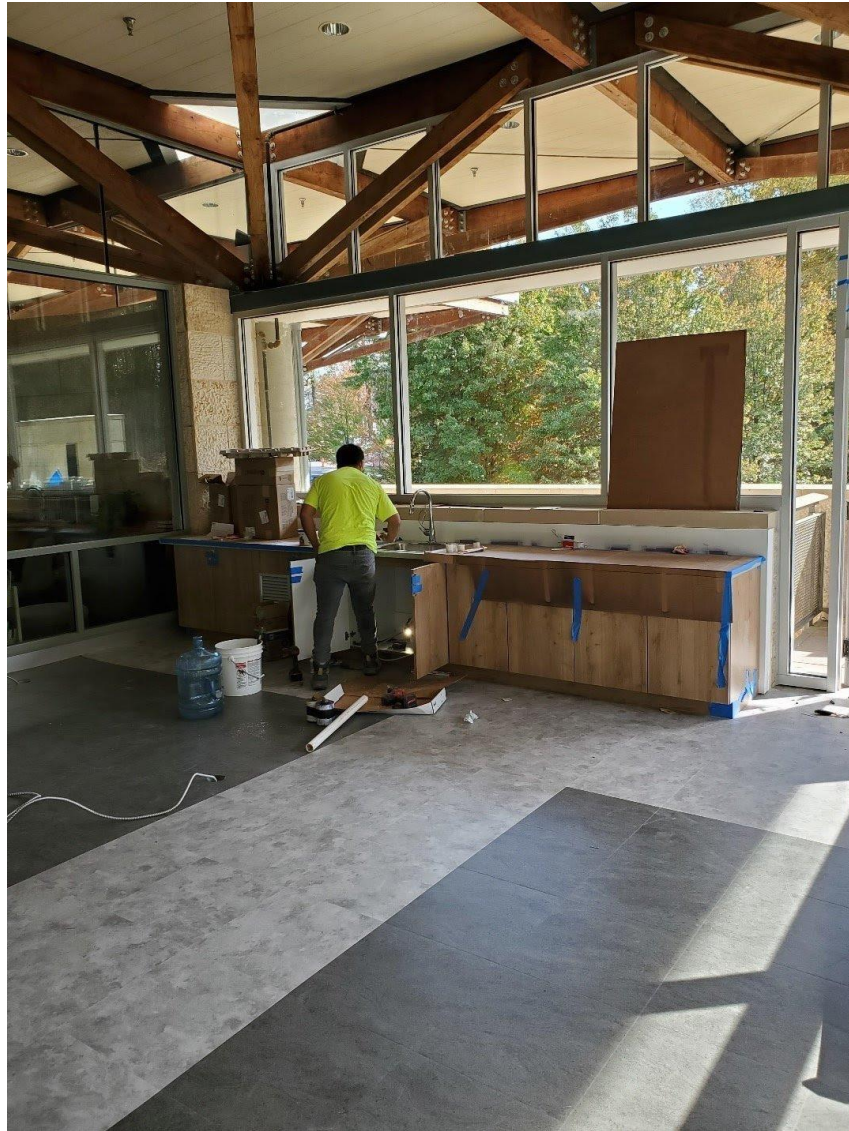


The lower two levels of the addition expand the storage for the schools and add a bathroom for the children to use. As mentioned last week, it also creates a new outside space for us on the lowest level, the Pond Patio.

Next to the library, you may remember that there was a small terrace and a stairway (most frequently used during the High Holidays as an exit after services in the Social Hall). That terrace has been enclosed and will be known as Rodef Café. While it is not yet finished, some great progress was made this past week, as you can see in the pictures below.







I'm most excited by the light that comes into that space, the lovely view of the trees, and the beautiful floor. It will be a lovely place to hang out and visit with friends.

As always, please reach out if you have any questions: [bptf@templerodefshalom.org](mailto:bptf@templerodefshalom.org)