

8.13.2020 Weekly Update

Reyna Pratt, Chair of the Building Project Task Force, provides our updates as construction progresses.

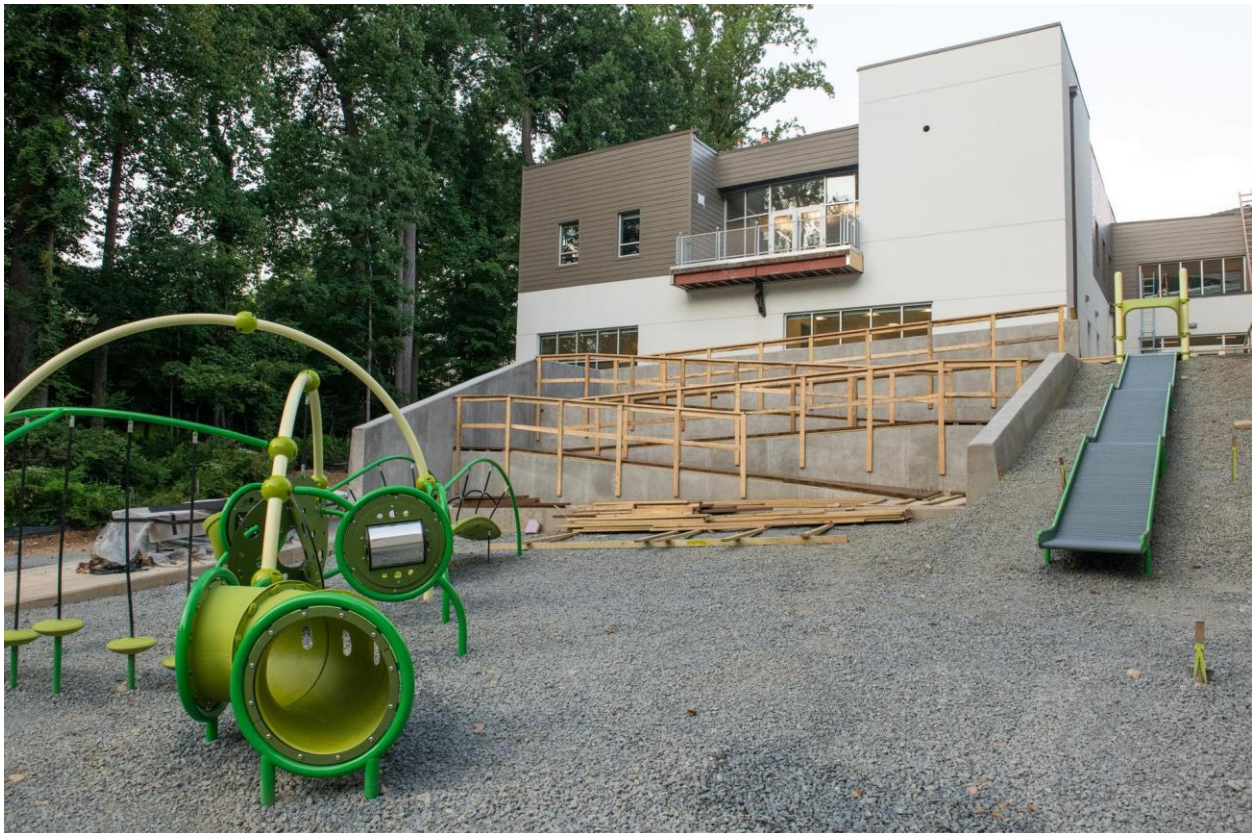
As you may remember, there will be an amazing playground on the west side of the clergy/classroom addition. In addition to running down the steep hill, there will be at least three new ways to get to that playground from the classroom addition (and from the school lobby). The first way is to use these new stairs. They were designed to open up more as you descend the stairs, so that if a group or a class wanted to meet at the bottom of the stairs, they could do so easily.



Another way to get down is via the switchback path that was mentioned in an earlier weekly update, and you can see it in this photo below:



While we are still waiting for handrails to be installed, the Kebony decking for the surface has been laid down, and it looks gorgeous.



And the third way is via the slide that you see above. That photo is a teaser – there will be a full update once the playground is finished. Besides, I need to test out the slide myself before I can give an accurate report!

As always, please reach out if you have any questions: bptf@templerodefshalom.org