

**Weekly Update 5.14.2020**

*Reyna Pratt, Chair of the Building Project Task Force, provides our updates as construction progresses.*

If you have ever tried to direct people on how to get to the Multipurpose Room (MPR), you know that it is our most difficult space to find. Great news - our architects came up with a fabulous design that solved that problem, and we are delighted to share the construction team progress on that space.

The photo below was taken at the base of the stairs that connect the school lobby and the sanctuary level. In this photo, you can begin to see evidence of walls that were removed.



To understand the photo below, imagine that you are standing in the school lobby, and those same stairs are above you. (You can just barely see the stairs – look for the gray/green object in the top right corner.) With this view, you can see the door to the MPR! You will be able to get to the MPR a few different ways: you can go up a couple of

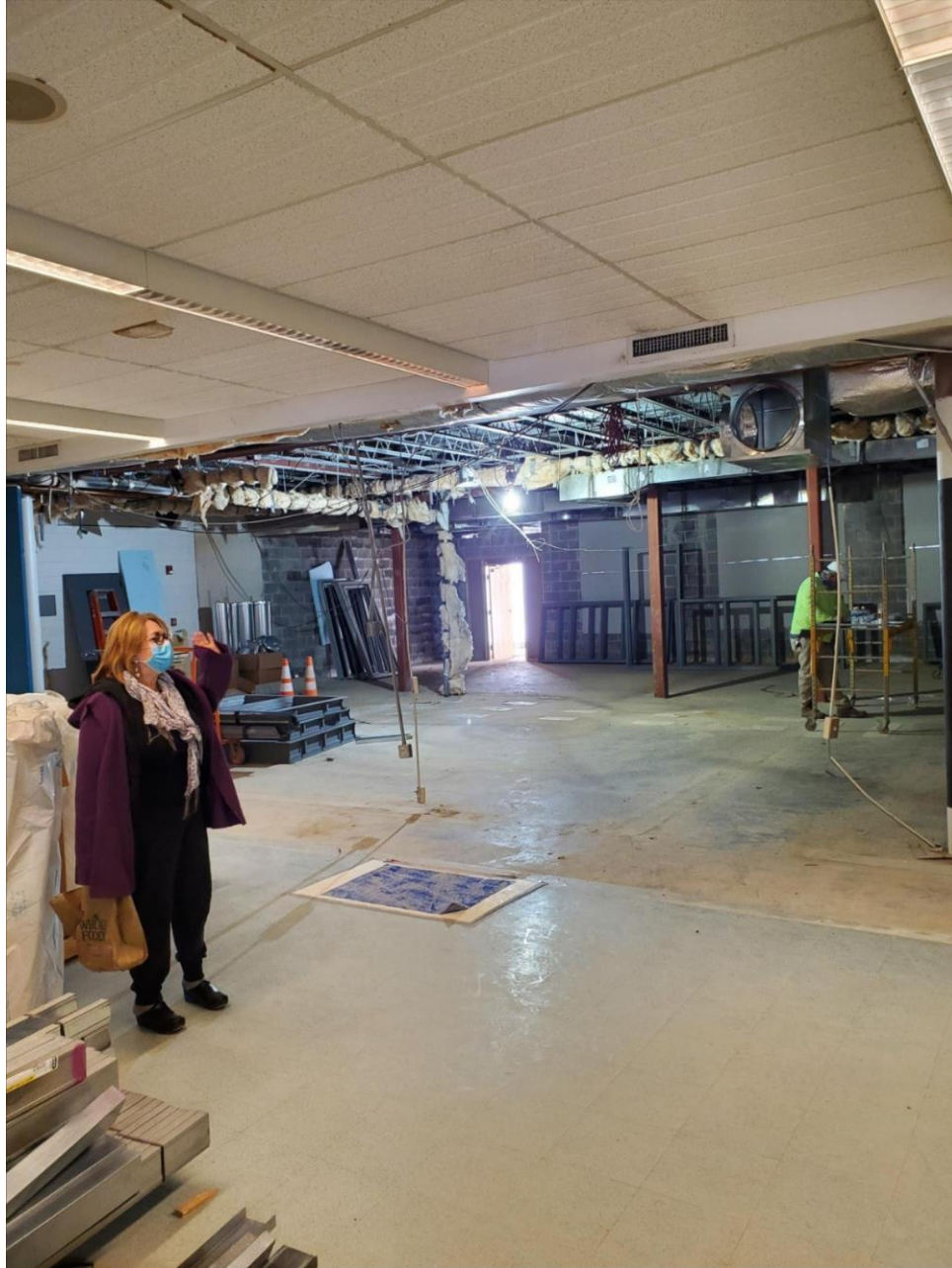
steps from the school lobby, you can go up the ramp that is to the left, or you can go around the staircase and up the two steps as seen in the previous photo. Also, once you get to the MPR, you will have a choice of stairs or the new ramp to enter the space.



The picture below is a closer look at the lobby space right outside of the MPR. This expansion of lobby space will allow the schools and Youth Groups some flexibility for their programs.



On the other side of the lobby, the temporary walls came down, and we can begin to see the work that is being done in the new Nursery School office space. The photo below was taken with the former Religious School office behind the photographer, facing toward the classroom addition. The open door at the far end leads to the lower walkway that connects to the new classrooms.



We remain incredibly grateful that the construction team is allowed to work, recognizing that this can change at a moment's notice. We continue to hope for the best and will keep you posted, of course.

As always, please reach out if you have any questions: [bptf@templerodefshalom.org](mailto:bptf@templerodefshalom.org)