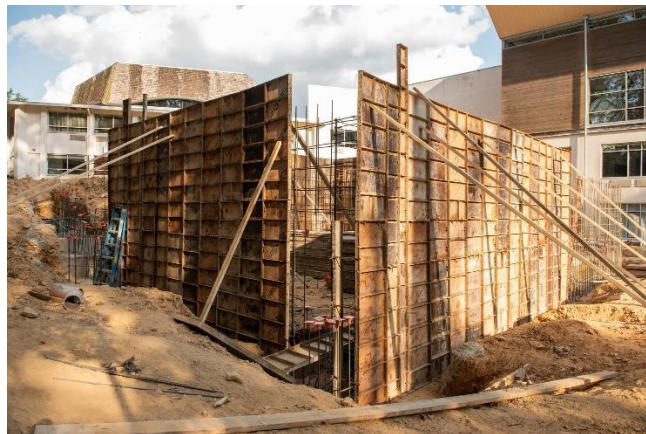




Big news – this is the LAST time that the new parking lot will be mentioned in these weekly updates! Why? Because, except for some final landscaping and wheel stops, the lot is finished and has been officially turned over to us! The striping is complete, and the 98 spots can be used from now on AND during the High Holidays. (However, please consider using the shuttles during the holidays – more information on those coming soon!) As soon as the weather is more conducive to successful planting (in other words, NOT August), the landscaping around the lot will be completed, and it will include some new trees.

For all that we're celebrating the completion of the new lot, we have some concerns for and about drivers entering the main parking lot from Westmoreland Street – PLEASE enter slowly. We will now have pedestrians (and cars) exiting the new lot, crossing our entrance road to get to the building. Even if you're running late for services or school or a meeting or an event... take it slow, we beg of you! We'll all be glad you did!

If you have any questions about the building project, feel free to email us at [bptf@templerodefshalom.org](mailto:bptf@templerodefshalom.org).



*Construction on the new addition with clergy and classroom space is beginning to take shape.*